



Information Pack 2023

FLY *BY* NITE

REHEARSAL STUDIOS

Welcome

First and foremost, thank you for considering FBN Studios, it would be our pleasure to host your production rehearsal. Our aim is for you to have the resources available to ensure your rehearsal is a resounding success. Our friendly and knowledgeable staff are here to assist in any way possible.

This pack should hold many of the technical answers to any questions that arise, and the Local Service guide will give you and your personnel some valuable local references. Our team is of course here to help, and happy to do so. Please do not hesitate to contact us with any questions.

Enjoy your stay with us at FBN Studios!



Meet The Team



Scottie Sanderson
FBN Studio Manager

+44 1527 962 963
+44 7789 831 615
scottie@fbnstudios.co.uk



Carl Reed
FBN Company Director

+44 1527 962 963
+44 1976 284 252
carl@fbnstudios.co.uk



David Coumbe
FBN Managing Director

+44 1527 520 720
davidcoumbe@flybynite.co.uk



Sven Knight KRS
House Rigger
Knight Riggering Services

+44 1253 894 688
sven@knightrigging.co.uk



FBN Studios - Broad Ground Road, Lakeside, Redditch, Worcestershire. B98 8YP - Tel: 01527 962 963
www.fbnstudios.co.uk - www.facebook.com/flybyniterehearsalstudios

Studio Overview

Completed in 2015, the Studio opened its doors at the start of 2016 and is currently Europe's largest purpose built production rehearsal facility. With an uninterrupted floor space of 1680 sqm (18,083 sqft), height clearance of 18.5 m (60') and rigging capacity of over 500 tonnes - FBN Studios are the ideal facility when considering a rehearsal space.

We have 6 x 400a 3ø services and multiple 125a, 63a and 32a 3ø outlets positioned around the Studio Floor, there should be enough power for even the most demanding production. There is also 13a ring main around the studio perimeter.

Fast and free hi-speed internet access will get you going from the moment you enter the building, and the offices come with air conditioning as standard. Plenty of space to stretch out and plan the production ahead.

There is ample free parking for trucks, busses and private vehicles on a secure site, with multiple 16a power points for shore power.

The Studio is available to use 24 hours around the clock, but security will be required for overnight sessions.

We have an onsite workshop for fabrication or repair, and a separate space where any local crew or staff can be based away from the main rehearsals. We can recommend a vast network of established industry supply companies in the immediate area should you find that last minute need or unforeseen request.

- 500 tonne roof loading capacity
- Power supplies in all 4 corners
- 2 spacious Production Offices
- 3 comfortable Dressing Rooms
- Large catering and dining area with great views over the lake
- Free secure onsite parking
- 3 Sunken loading docks, 1 drive in access
- Free Wi-fi throughout
- Juliette Balcony on top floor overlooking lake
- Separate VIP and goods lifts

A Bit of Background

Fly By Nite have over 25 successful years experience in supplying vehicles and drivers for the music and entertainment industry. With a fleet of more than 110 vehicles to draw from, Fly By Nite can offer unrivalled transport solutions – no matter what size of tour. We boast one of the largest fleets of Megacube trailers and 26 tonners in the business.

Fly By Nite has invested heavily in a bespoke new state of the art Production Rehearsal facility to further strengthen existing clients needs, and develop new relationships. We have also recently invested in a brand new storage area offering individually secured cages for backline equipment and to give clients a dedicated preparation area. This is complemented by a temperature controlled warehouse facility for the storage of Set and theatrical props.

We would be delighted to quote for any trucking or storage requirements you may have.

- Underfloor heating in the Studio
- Forklift available on request
- Additional 2 Luxury dressing rooms
- Green room / wardrobe room
- 21 On site en-suite bedrooms
- Laundry room
- Gym
- Sauna
- VIP rooftop terrace over looking Arrow Valley Lake
- Coming soon. Helipad!



Power

Power services are located in all 4 corners of the Studio to allow the most effective position of your production to tailor for your individual needs. Please see studio layout overleaf for further details. All sockets in the offices and dressing rooms have dual USB charging points.

Ground Floor - Studio

6 x 400a 3ø	Powerlock
6 x 125a 3ø	Ceeform
5 x 63a 3ø	Ceeform
10 x 32a 3ø	Ceeform
14 x 13a	Double Sockets

Sixth Floor - Catering

1 x 32a 1ø	Ceeform
2 x 32a 3ø	Ceeform

Rigging

FBN Studios roof has a UDL capacity of 500 tonnes, and exceeds most UK venue specifications. With this in mind, it should facilitate the most challenging of incoming productions during that all important rehearsal stage.

Clearance from the floor to the underside of the grid gives a maximum rigging height of 18.5m (61') A series of custom slings allows the motor hook to gain the maximum height possible, and anywhere in the roof. The completely closed roof is designed without the need for gantries or dedicated walkways

FBN Studios are pleased to have Knight Rigging Services (KRS) involved as the house rigging contractor. Being able to liaise directly with KRS from the outset results in a smoother line of communication. A dedicated rigging supervisor will be appointed to each production and will ensure incoming riggers adhere to the high standards set by the Studio rigging and safety policy. They will be an active part of the rigging call, resulting in one less local rigger needed.

Layout

Ground Floor - Offices

Main Studio Space
Production Office 1
Production Office 2
Small Kitchenette



First Floor – Dressing Rooms

Dressing Room 1
Dressing Room 2
Dressing Room 3
Viewing Gallery



Second Floor

Additional 2 Luxury Dressing Rooms
Laundry Room
Green Room / Wardrobe Room



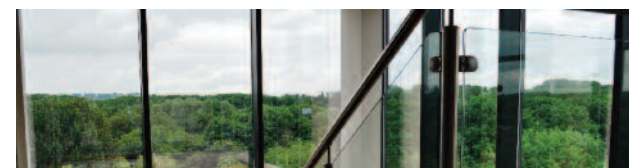
Third Floor

7 Ensuite Rooms
Gym
Viewing Gallery



Fourth Floor

7 Ensuite Rooms (2 Doubles)



Fifth Floor

7 Ensuite Rooms
Sauna Shower Room



Sixth Floor - Catering

Kitchen Area
Seating Area 1 & 2

Catering/Dining

Catering is situated on the top floor, and has been designed to allow maximum flexibility for incoming productions. We have included some kitchen basics, to be complemented by the clients caterer of choice, tailored to your own preferred layout. We can of course recommend local catering companies to assist where required. No appliances are supplied. Kitchen and display fridges, and chest freezers can be hired upon request

3 x Stainless steel prep tables on wheels

Fixed overhead Extraction Unit

Juliette Balcony

30 x Trestle Tables

60 x Dining Chairs

Please note we do not allow the use of gas for cooking in the FBN Studio.

Access/Parking

There is ample free parking for trucks, busses and private vehicles on a secure site. Codes will be supplied to production and drivers to gain access, and to ensure only production appointed visitors are on site.

3 x Sunken truck loading docks

1 x drive in loading door

8 x Land line hook up points

Plenty of parking out front for production vehicles

Health & Safety

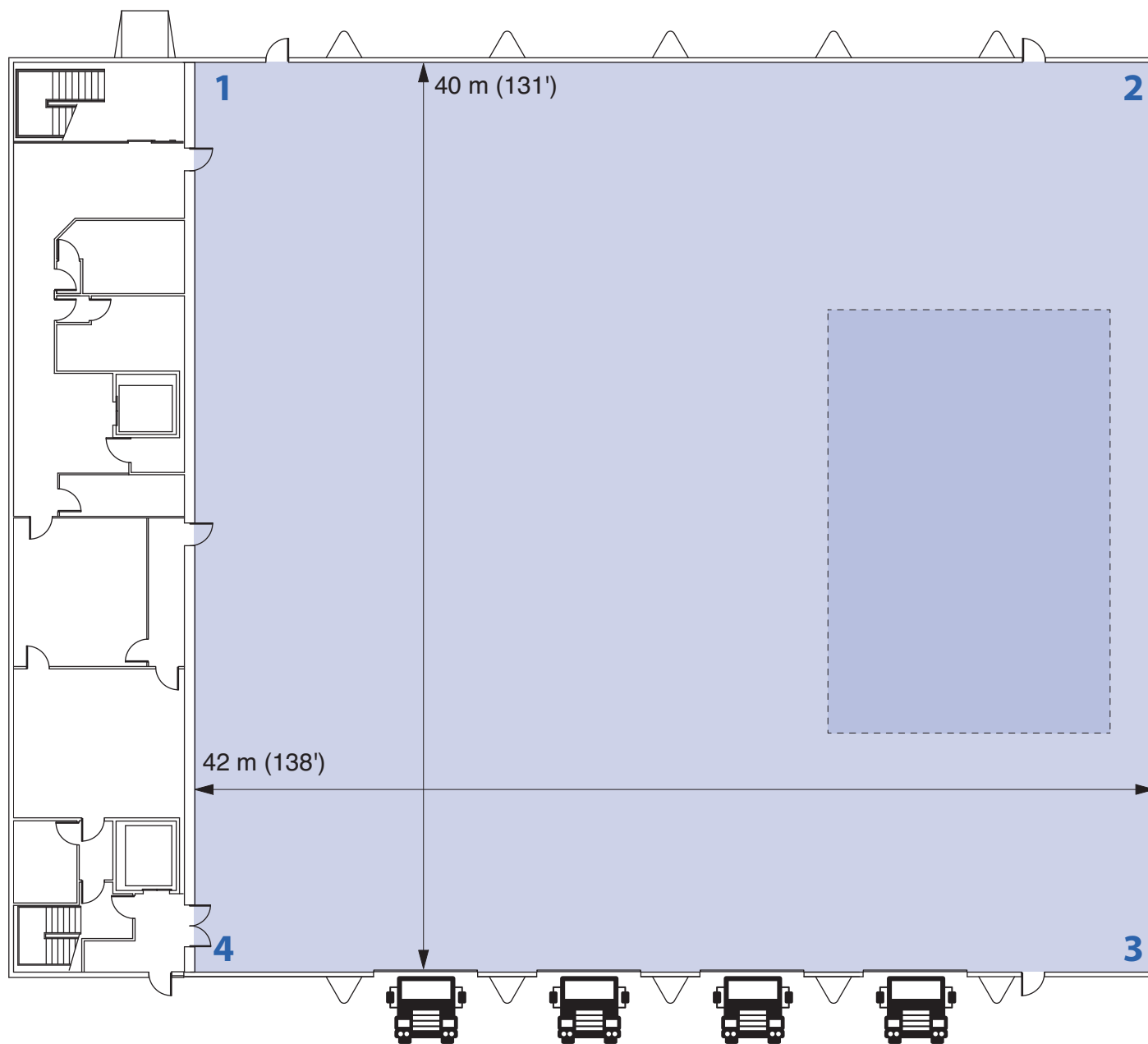
Please inform us prior to use of smoke or haze machines, and any pyrotechnics so we can ensure the Studio alarms and detectors are isolated and relevant precautions can be implemented in advance. We would ask that visiting production staff are suitably vigilant during this time to raise an alarm if necessary.

Whilst there are no noise restrictions at FBN Studios, we do ask you to be considerate to the surrounding neighbours, and only use excessive levels as and when required.

Current legislation makes it against the law to smoke in any building or enclosed workplace in the UK. Whilst this does not currently apply to e-cigarettes, we would kindly ask visiting crew and staff to apply the the same rules, and restrict smoking to the designated areas outside.

A smoking area can be found outside to the rear of the car park, please dispose of your cigarette butts responsibly. We would appreciate assistance from production managers to assist in strict enforcement of this law whilst using the Studio.





Studio Plan

The Studio itself has plenty of space, power, height and weight capacity for any incoming production.

There are sunken cable traps in the floor (North to South, and East to West) and we have also installed cable ducts direct into the offices for multicore, power etc. The result is a safe, and trip hazard free environment.

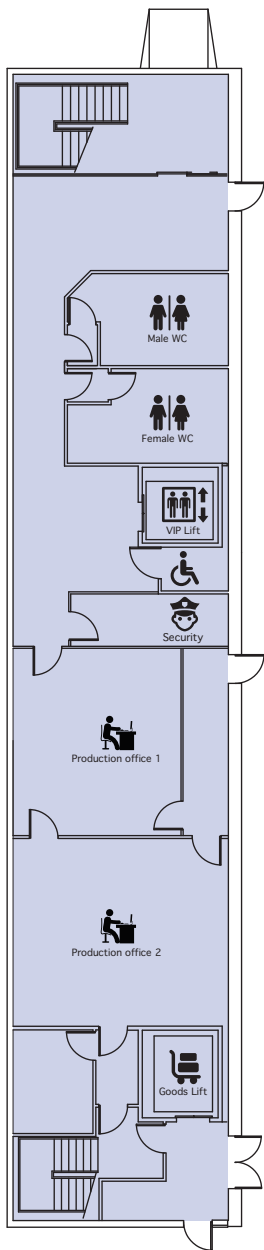
Sunken cable traps in the floor (North to South, and East to West) ensure whichever orientation you position the stage, the space remains safe and trip hazard free.

3 x sunken loading docks
1 x drive in access

Power

- 1 1 x 63a 3Ø Ceeform
2 x 32a 3Ø Ceeform
- 2 3 x 400a 3Ø Powerlock
2 x 125a 3Ø Ceeform
2 x 63a 3Ø Ceeform
2 x 32a 3Ø Ceeform
- 3 2 x 125a 3Ø Ceeform
2 x 32a 3Ø Ceeform
- 4 3 x 400a 3Ø Powerlock
2 x 125a 3Ø Ceeform
2 x 63a 3Ø Ceeform
2 x 32a 3Ø Ceeform

Ring main 13a



Ground Floor Plan

The ground floor is the entrance to the FBN Studios and offers direct access to the arena floor.

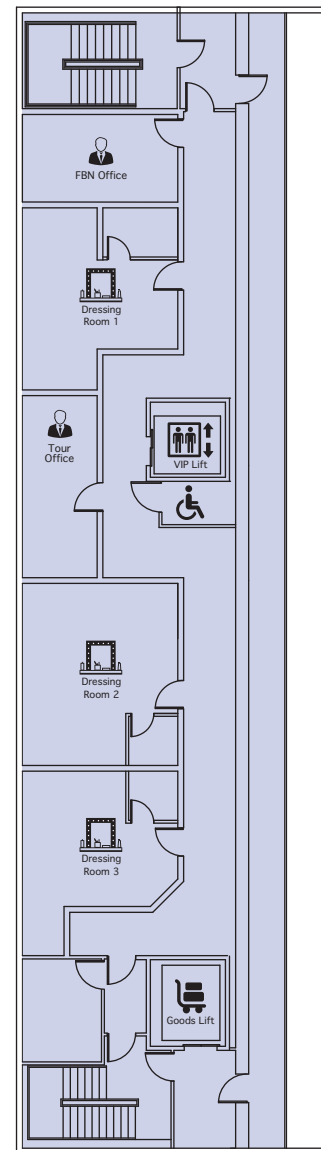
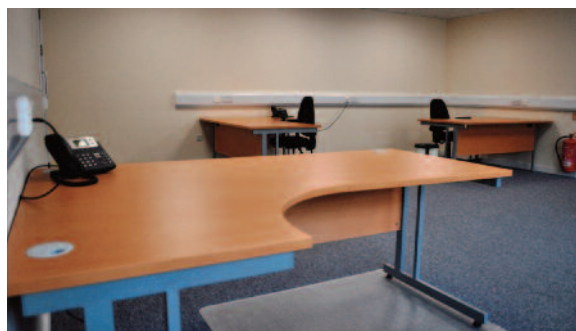
There is a reception area for meeting guests, that leads through to the lobby and VIP lift – for access to the dressing rooms and remaining floors.

2 state of the art production offices come with air conditioning and high speed WiFi throughout. Natural light pours through the windows that run the entire length of the floor to make the offices a bright and welcoming space. The offices can be configured to suit the users needs, and a corridor links both to the Studio. Cables run direct in studio to reduce trip hazards and blocking fire doors.

The goods lift at the far end of the building services the Catering floor and access to the rigging gantry. A set of double doors allows catering cases and appliances to transit from the studio floor to the goods lift.

Production Office 1 5.7m x 6.5m (19' x 21')

Production Office 2 7.3m x 6.5m (24' x 21')



First Floor Plan

Three of the Studio Dressing Rooms can be found on the first floor, all with en-suite facilities and air conditioning. Each room is fitted out with a TV, settees, chairs and coffee tables to relax and unwind.

This level also boasts a viewing platform, which can also be used as a spot bridge where touring Spotlights can be situated, or an elevated FOH for LD's to base themselves for programming. Ample power is available either side from the Studio floor.

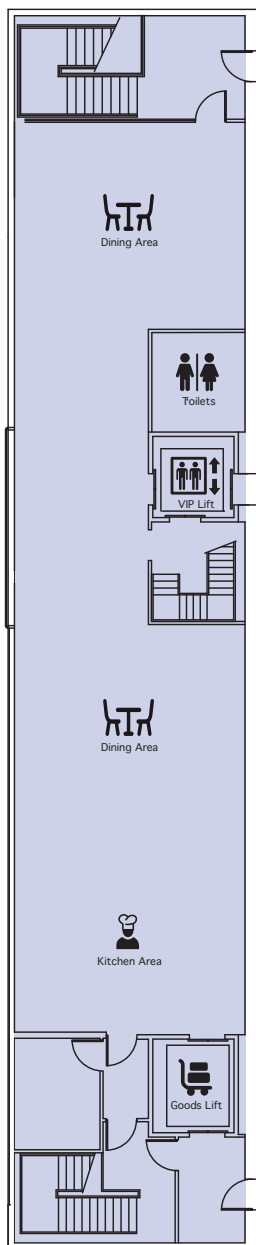
The FBN Office is also situated on this floor, ensuring Studio staff are always on hand to assist with any queries that may arise.

Dressing Room 1 5.4m x 4.7m (18' x 15')

Dressing Room 2 5.4m x 6.3m (18' x 21')

Dressing Room 3 5.4m x 6.3m (18' x 21')





Sixth Floor Plan

Catering is situated on the top floor, and has been designed to allow maximum flexibility for incoming productions. We have included some kitchen basics, to be complemented by the client's caterer of choice, tailored to your own preferred layout. We can of course recommend local catering companies to assist where required.

In the kitchen/preparation area, you will find a double industrial stainless steel sink, stainless steel veg washing sink, and 3 wheeled stainless steel prep tables

With 30 trestle tables and 60 dining chairs, there should be sufficient seating to accommodate the largest of productions.

We can also offer catering fridges, display fridges and freezers upon request.

Kitchen area 7m x 6.4m (23' x 21')

Seating Areas 23m x 6.4m (74' x 21')



Roof Top Plan

FBN Studios will be the only rehearsal facility to offer it's own rooftop Helipad!

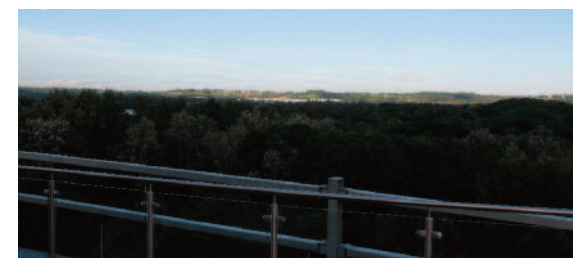
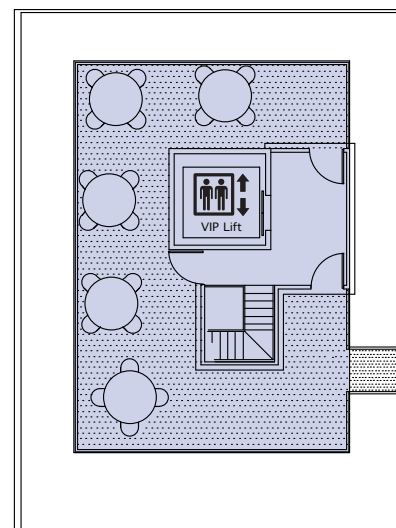
Not only can prestigious Artists arrive in style, but can also leave without the fear of traffic or delayed journeys to onward engagements.

You can leave London and arrive at the Studios in as little as 40 minutes!

The roof top terrace will be the place to be seen this summer!

Our VIP Rooftop Terrace will be the perfect spot to sit back and relax, and take in the panoramic view that overlooks Arrow Valley Park Lake.

Tables and chairs are complimented by space saving Patio Heaters, so even on those colder days, you can get away from the Studio and escape the rigors of production rehearsals!



FBN Studios will ensure the Production offices, toilets and dressing rooms are cleaned daily. We would ask that any incoming production to take responsibility for the upkeep of the main studio and catering floor. We would be grateful if you could ensure the studio is kept as clean and tidy as is practical, and leave it as you would expect to find it.

Frequently Asked Questions

Q. What is included in the hire?

- A. Standard hire will get you the following:-
24 hour Exclusive access to the ground floor offices, Studio space, first floor dressing rooms and catering floor*
Wifi throughout building
Daily cleaning of offices and dressing rooms
Ample secure parking for trucks, busses and private vehicles with power outputs

Q. What extras do I need to consider?

- A. Electrical power is charged at £0.25p per KW/hr
Gas is charged at £0.28p per KW/hr
Phone calls are charged per unit
Security after hours*
Rigging supervisor, climbing and ground riggers**
Local Crew – available on request
Forklift hire - available on request
Fridge Hire - available on request

Q. I require full production – do you supply?

- A. We don't hire any equipment ourselves, but can recommend numerous local industry recognised specialists to cater for any needs you may have from lighting and video, audio and staging – and everything in between.

Q. Can you offer equipment transportation?

- A. Yes. With a commercial fleet of over 110 trailers we can easily cater to your transport requirements.

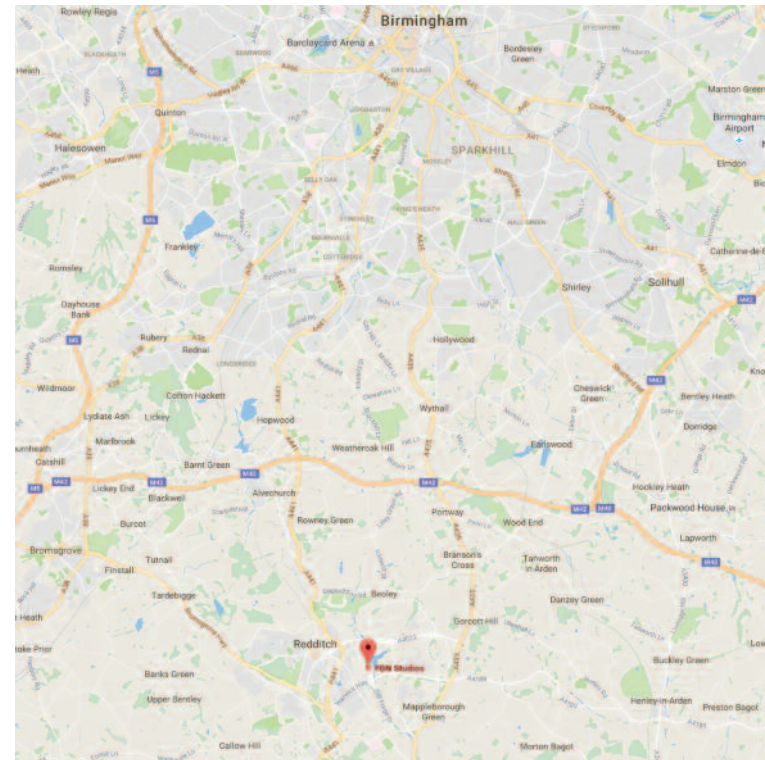
Q. Do I have to use Knight Rigging Services?

- A. Yes - we have worked very closely with KRS to develop specific codes of practice and procedures for incoming productions. The KRS Rigging Supervisor is there to ensure that the Event/Tour Rigger follows the high standards set by KRS and FBN Studios new rigging and safety policy.

** Studio hours operate 0800 – 2000. In order to remain later, or for overnight considerations, additional security will be required at the prevailing rate of £150 per session, unless taking accommodation.*

*** Rigging call is based on a 10 hour day with overtime charged at time and a half*

How to Find Us



FBN Studios

Broad Ground Road, Lakeside, Redditch, Worcestershire. B98 8YP

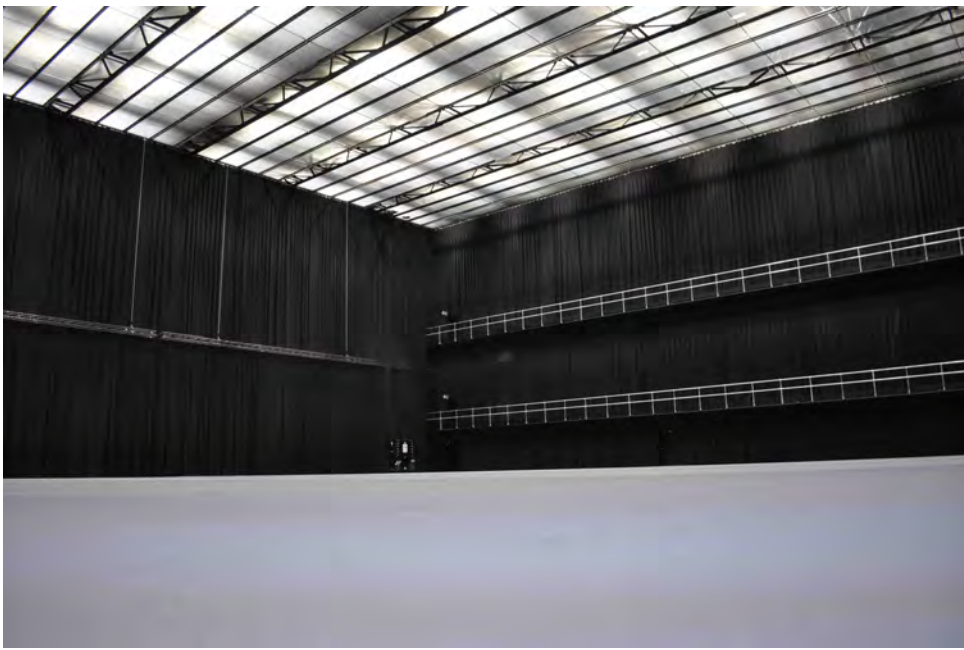
We are based in Redditch, close to Junction 3 of the M42 allowing easy access to all major motorways.

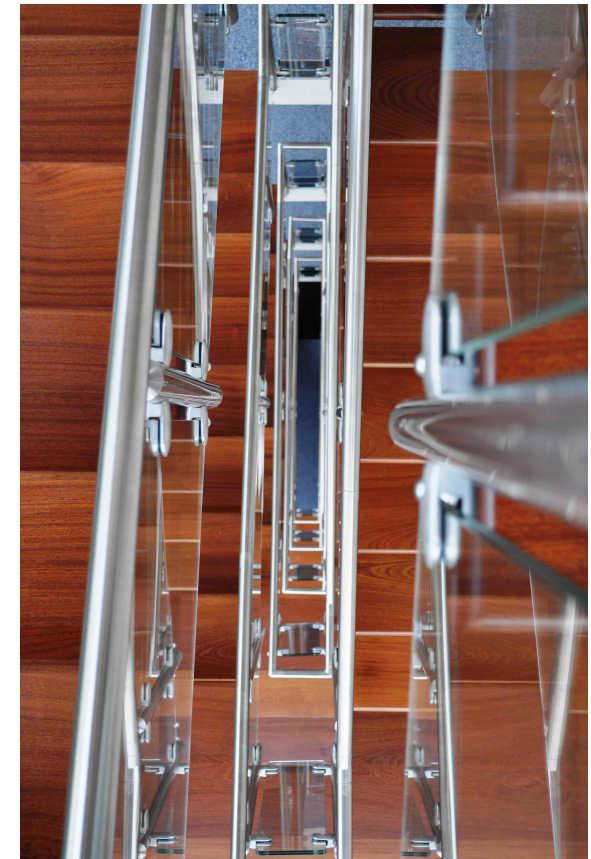
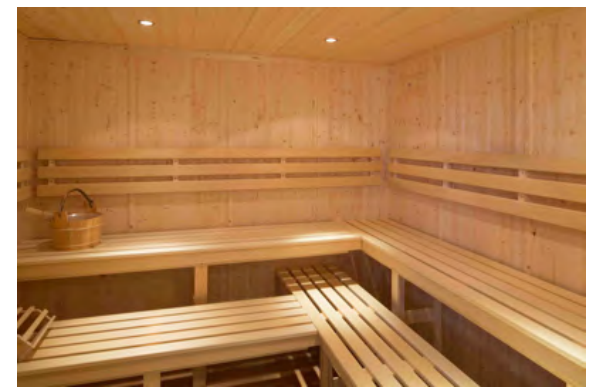
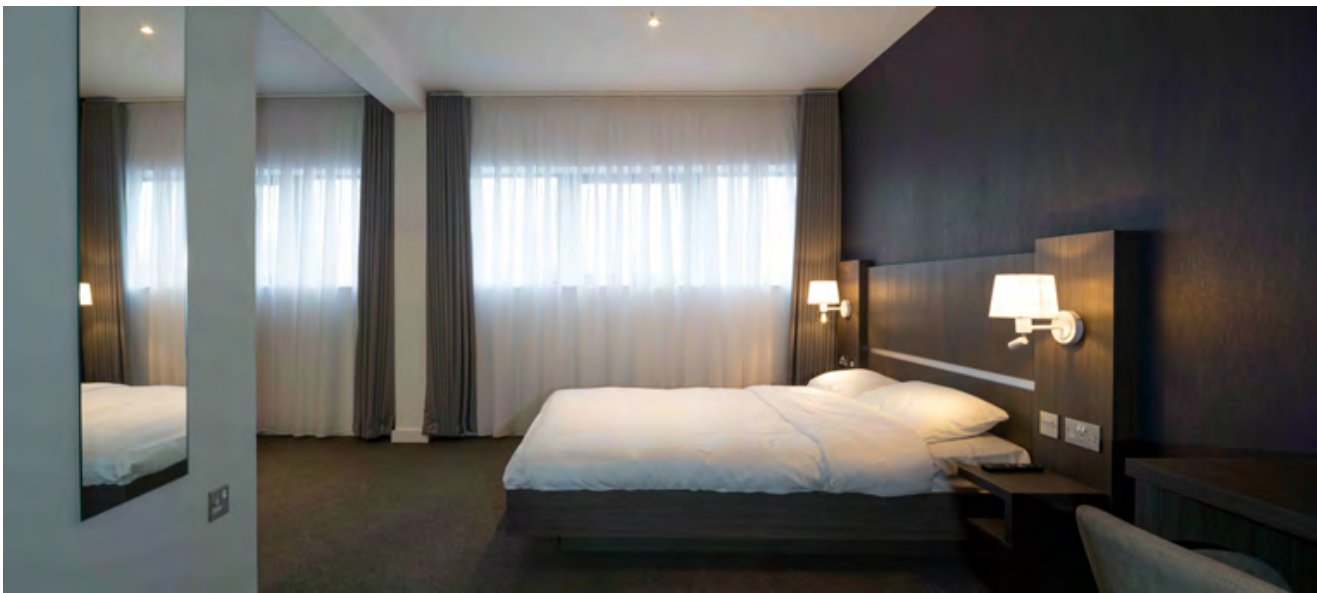
Ideally located in the centre of the UK, we are well placed and served by the main rail networks and nearby Birmingham International Airport.

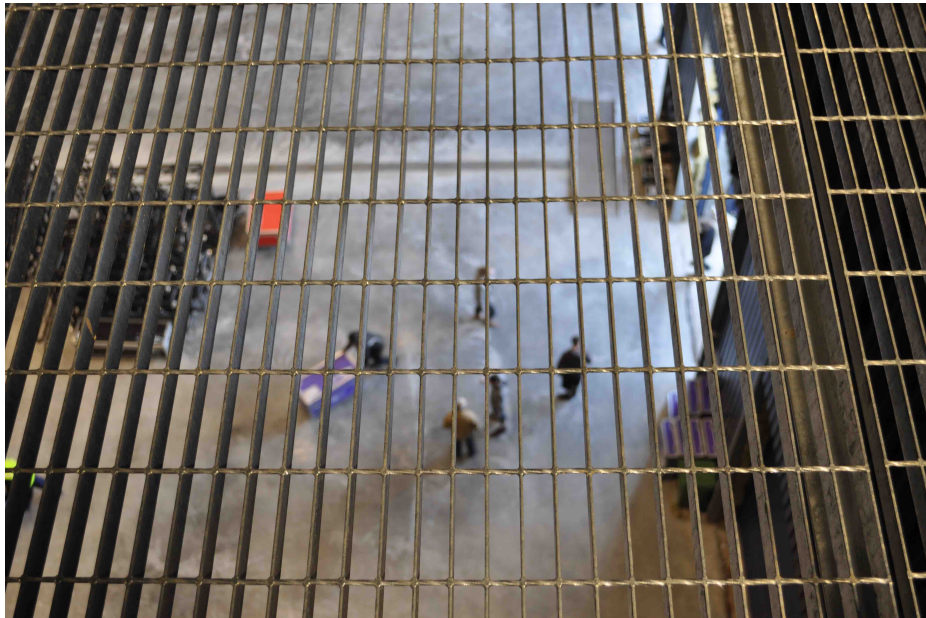
Whether it is getting equipment to the Studio, or crew flying in from overseas, we are never too far from a major transport hub.

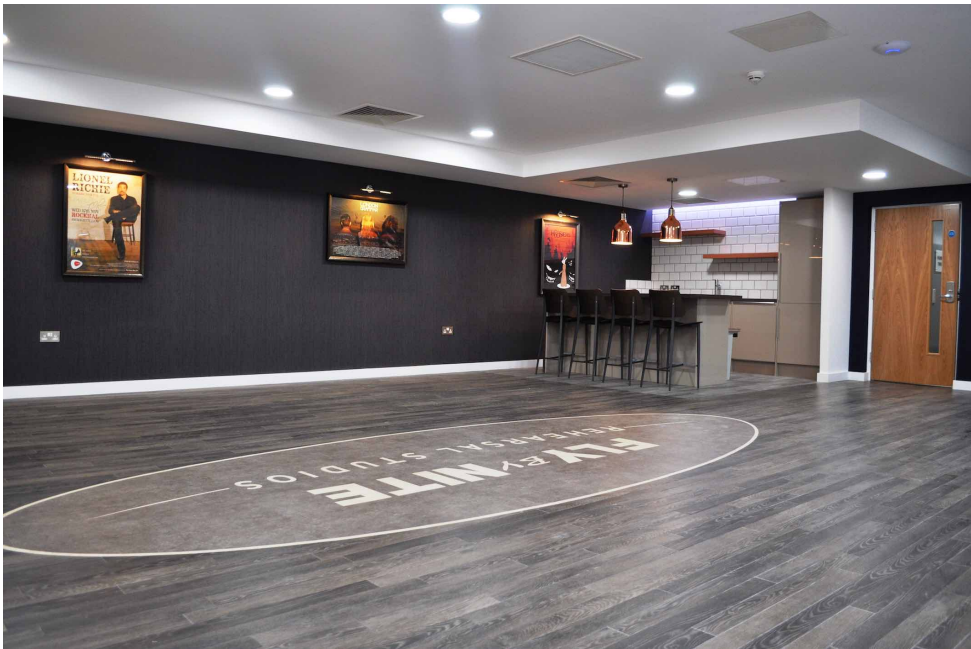
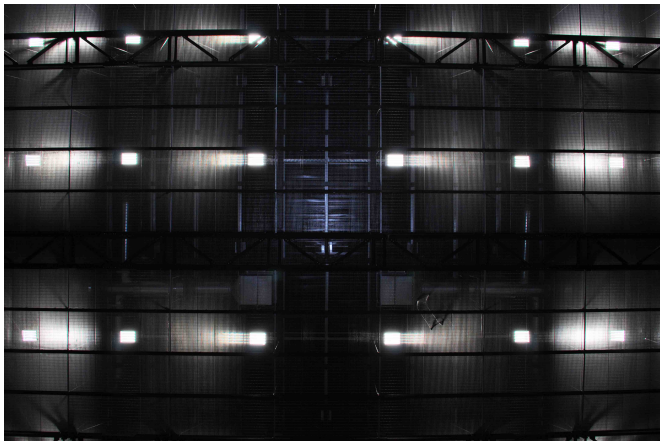


FBN Studios - Broad Ground Road, Lakeside, Redditch, Worcestershire. B98 8YP - Tel: 01527 962 963
www.fbnstudios.co.uk - www.facebook.com/flybyniterehearsalstudios









FBN Studios - Broad Ground Road, Lakeside, Redditch, Worcestershire. B98 8YP - Tel: 01527 962 963
www.fbnstudios.co.uk - www.facebook.com/flybyniterehearsalstudios